



El Dorado County Fire Protection District



Station 25 Run Statistics April 2023

ENGINE 25: 288 Total Calls

- Medical Aid- 237
- Fire- 4
- Traffic Collision- 17
- Public Assist - 14
- Misc. – 18
- Move/Cover – 2

MEDIC 25: 346 Total Calls

- Medical Aid- 292
- Fire- 3
- Traffic Collision- 12
- Transfer - 17
- Misc.- 2
- Move/Cover - 20



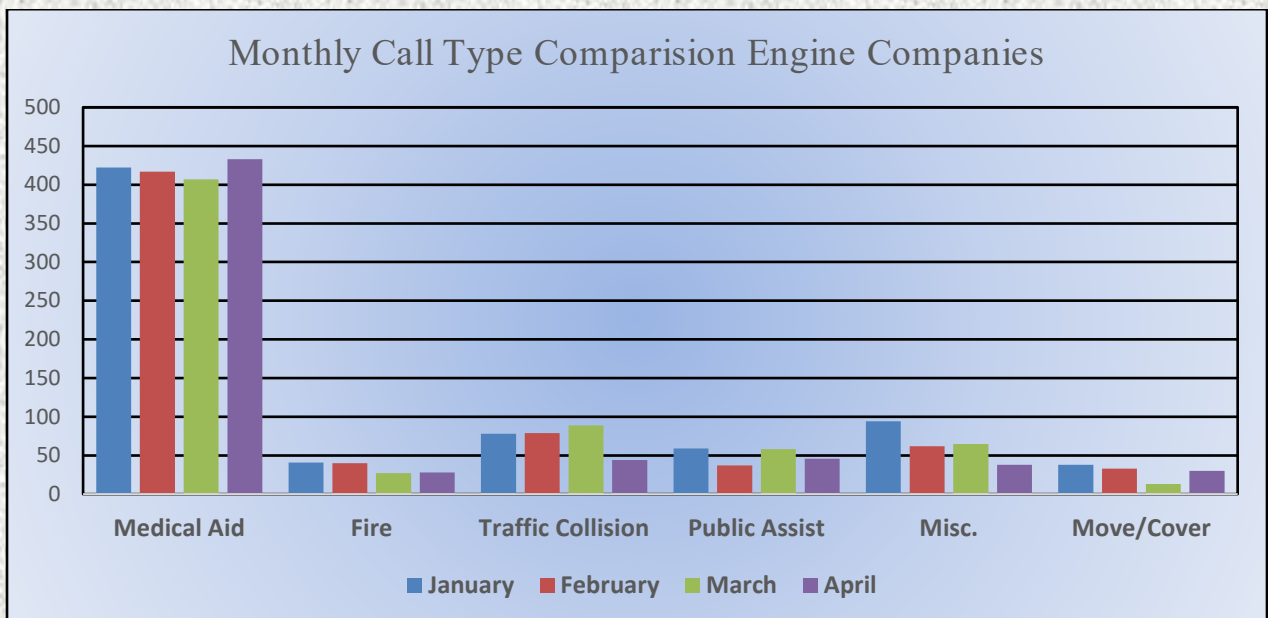
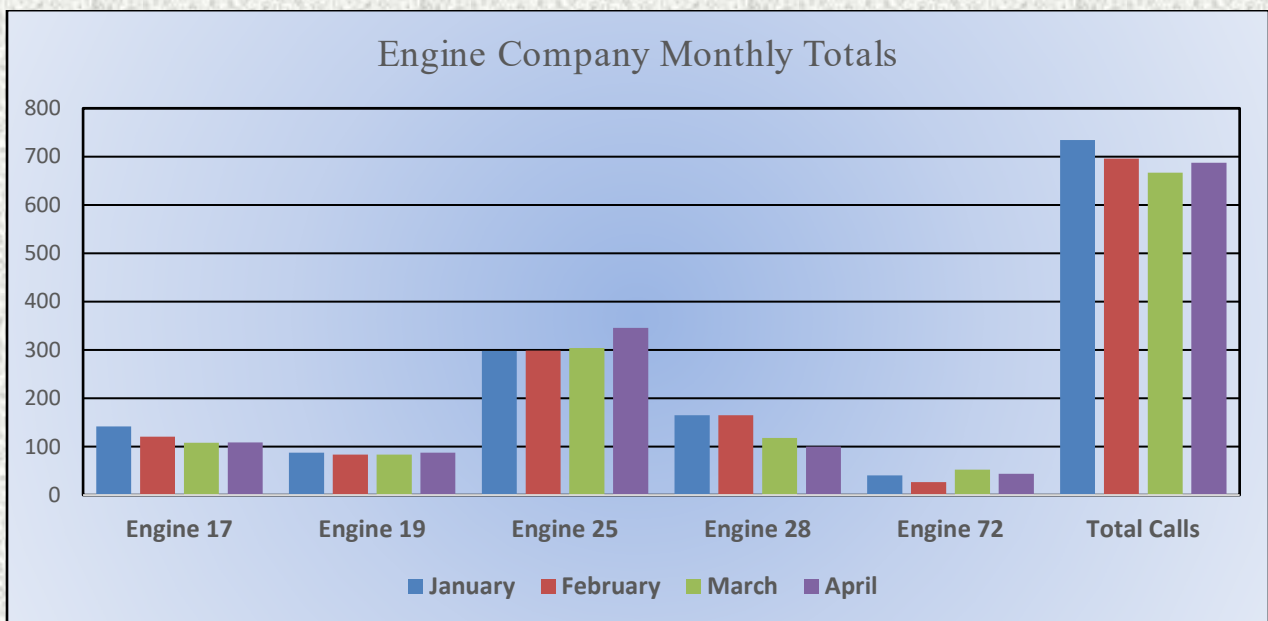


El Dorado County Fire Protection District



Monthly Run Statistics and Call Break Down April 2023 Engine Companies and Medic Units

Total Responses for Engine Companies: 687

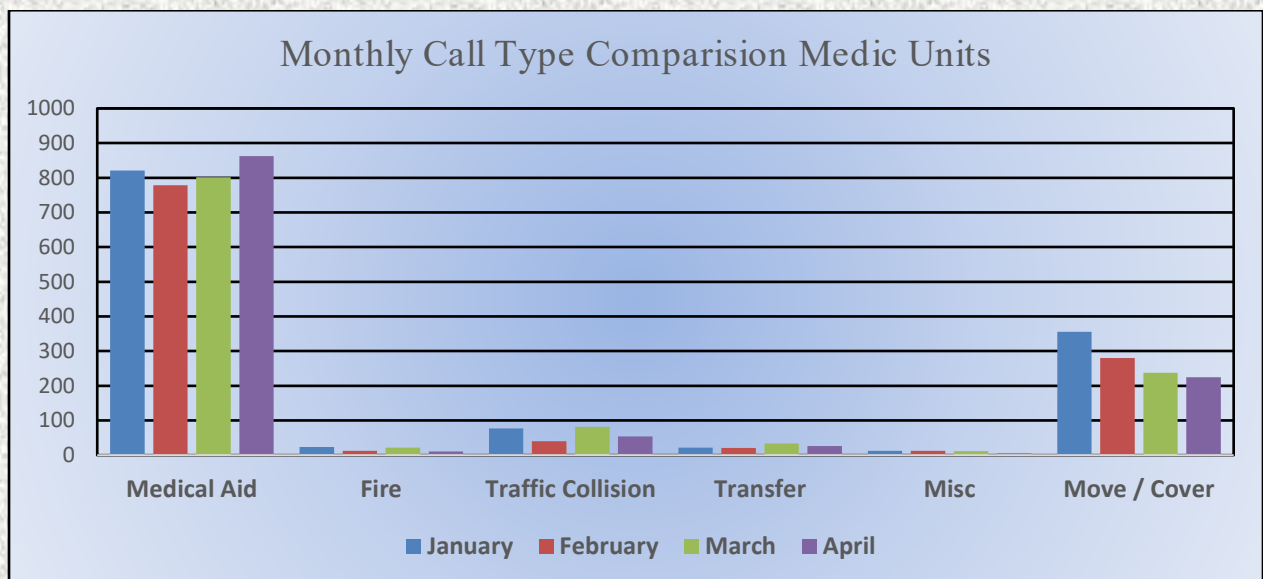
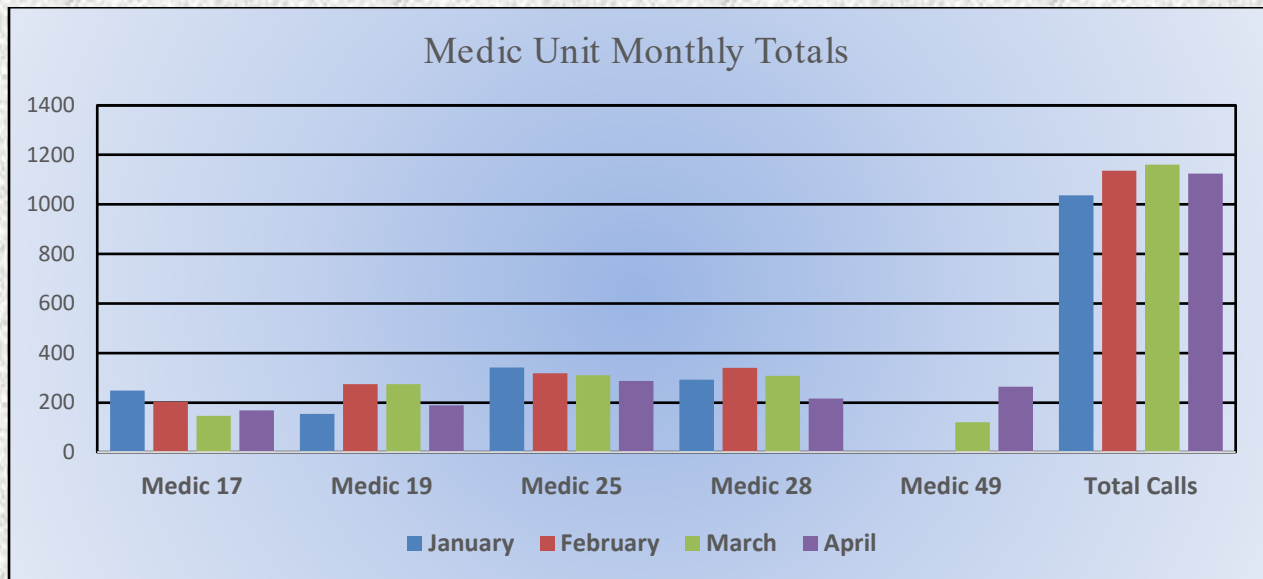




El Dorado County Fire Protection District



Total Responses for Medic Units: 1125





Engine 25 Monthly Statistics Comparison

